

EI60

F131

4,32

F0136

F0137

F0135  
BD EI30

h2400

+4,32

**F2-1**  
1R+STK  
1H+TK

31,5m<sup>2</sup>

**F104**  
STK

25,9m<sup>2</sup>

F132

- E

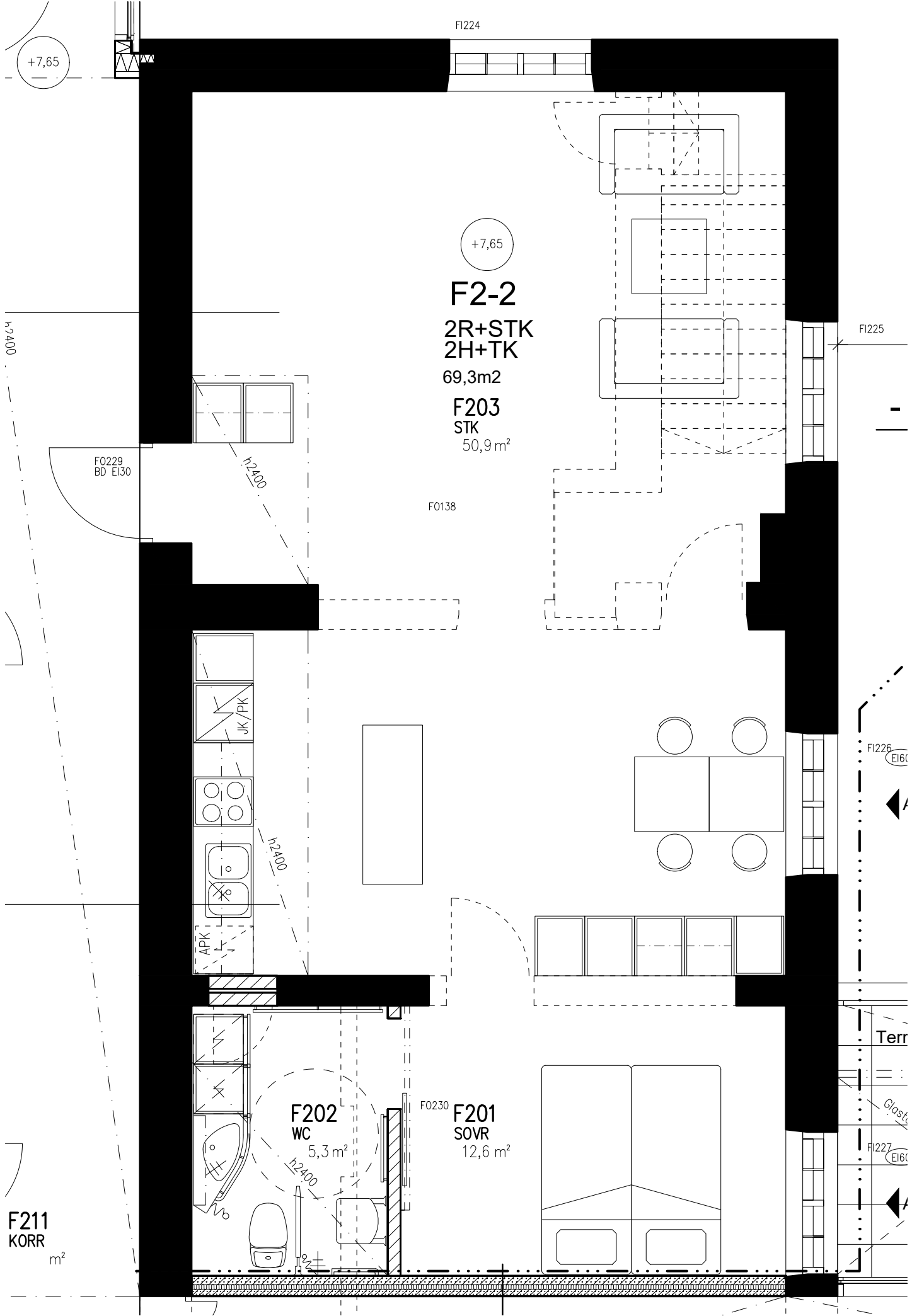
**F104A**  
WC  
4,2 m<sup>2</sup>

h2400

F0138

EI

h2400



+7,65

F1224

+7,65

**F2-2**

**2R+STK  
2H+TK**

69,3m<sup>2</sup>

**F203**

**STK**  
50,9 m<sup>2</sup>

F1225

F0229  
BD E130

F0138

h2400

h2400

h2400

APK

JK/PK

JK/PK

JK/PK

JK/PK

F1226  
E160

Terr

Glast

F1227  
E160

F0230

**F201**

**SOVR**  
12,6 m<sup>2</sup>

**F202**

**WC**  
5,3 m<sup>2</sup>

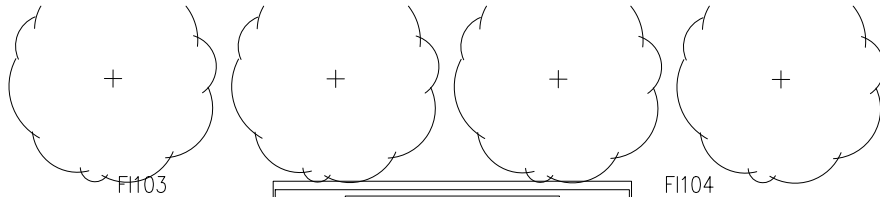
**F211**  
**KORR**

m<sup>2</sup>

EI60

06

EI60



F1103

F1104

F0106

**F3-2**

1R+STK  
1H+TK

35,4m<sup>2</sup>

**F116**

STK

29,7m<sup>2</sup>

F0107

**F115**

WC

4,2 m<sup>2</sup>

h2400

h2400

EI60

F0108  
BD EI30

2400

